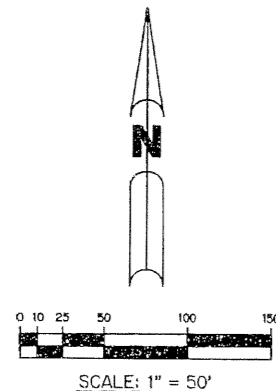


RIVERWALK - PLAT THIRTEEN

A PARCEL OF LAND LYING IN SECTION 21, TOWNSHIP 43 SOUTH,
RANGE 42 EAST, CITY OF WEST PALM BEACH,
PALM BEACH COUNTY, FLORIDA.

SHEET 2 OF 3 APRIL, 1999

169

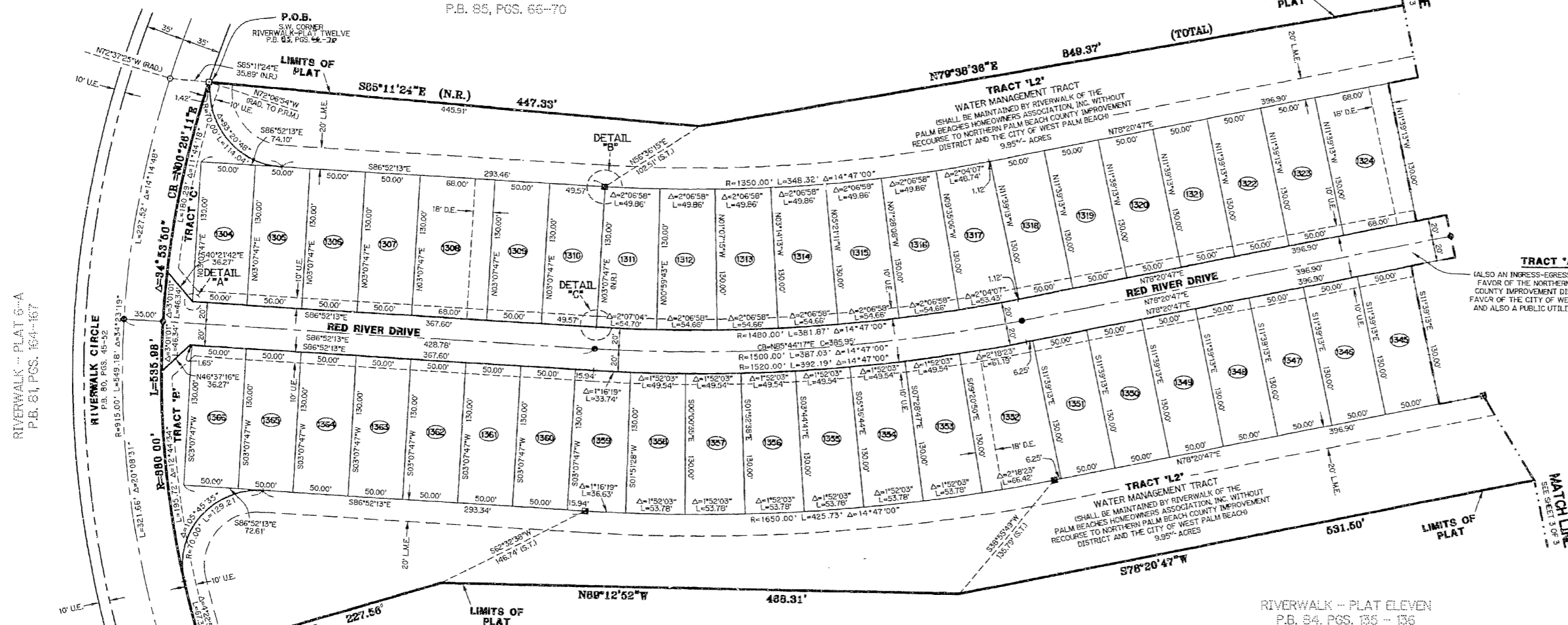


RIVERWALK - PLAT TWELVE
P.B. 88, PGS. 66-70

RIVERWALK - PLAT TWELVE
P.B. 88, PGS. 66-70

LIMITS OF PLAT

MATCH LINE
SEE SHEET 3 OF 3



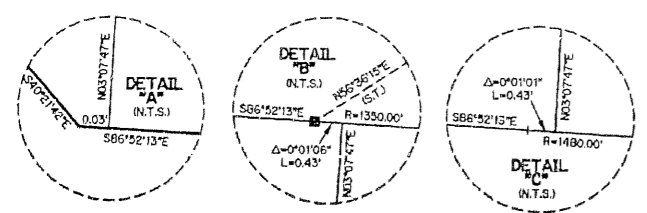
RIVERWALK - PLAT 6-A
P.B. 81, PGS. 164-167

TRACT 'A'
(ALSO AN INGRESS-EGRESS EASEMENT IN FAVOR OF THE NORTHERN PALM BEACH COUNTY IMPROVEMENT DISTRICT AND IN FAVOR OF THE CITY OF WEST PALM BEACH AND ALSO A PUBLIC UTILITY EASEMENT.)

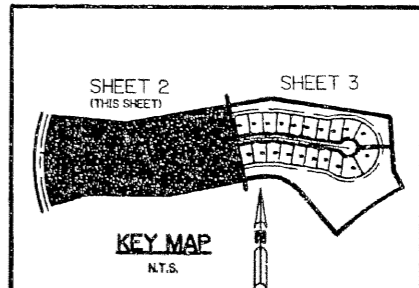
RIVERWALK - PLAT ELEVEN
P.B. 84, PGS. 135 - 136

RIVERWALK - PLAT ELEVEN
P.B. 84, PGS. 135 - 136

- LEGEND:**
- - FOUND PERMANENT REFERENCE MONUMENT, PLS #4213
 - - FOUND PERMANENT CONTROL POINT, PLS #4213
 - - SET PERMANENT REFERENCE MONUMENT, PLS #4213
 - - SET PERMANENT CONTROL POINT, PLS #4213
 - Δ - DELTA ANGLE
 - B.E. - BUFFER EASEMENT
 - D.E. - DRAINAGE EASEMENT
 - L - ARC LENGTH
 - L.M.E. - LAKE MAINTENANCE EASEMENT
 - N.P.B.C.I.D. - NORTHERN PALM BEACH COUNTY IMPROVEMENT DISTRICT
 - NR - NOT RADIAL
 - N.T.S. - NOT TO SCALE
 - O.R.B. - OFFICIAL RECORD BOOK
 - P.B. - PLAT BOOK
 - PGS. - PAGES
 - PLS - PROFESSIONAL LAND SURVEYOR
 - P.S.M. - PROFESSIONAL SURVEYOR AND MAPPER
 - R - RADIUS
 - R.E. - RIVERWALK EASEMENT
 - R/W - RIGHT-OF-WAY
 - S.T. - SURVEY TIE
 - U.E. - UTILITY EASEMENT
 - P.O.B. - POINT OF BEGINNING
 - P.O.C. - POINT OF COMMENCEMENT
 - CB - CHORD BEARING
 - C - CHORD DISTANCE
 - P.R.M. - PERMANENT REFERENCE MONUMENT
 - RAD. - RADIAL



THIS INSTRUMENT PREPARED BY
PERRY C. WHITE, P.S.M. 4213, STATE OF FLORIDA
LAWSON, NOBLE AND WEBB, INC.
ENGINEERS PLANNERS SURVEYORS
WEST PALM BEACH, FLORIDA
6674



A389-RW13 SHEET 2 OF 3